



**IATF
16949:2016
CERTIFIED**

COMPANY PROFILE

BOMAG





TABLE OF CONTENTS

- About Us
- Quality Policy
- Our Services
- Sales Volume Ratio
- List Of Machines
- List Of Measuring Instruments
- IATF 16949:2016 Certified
- Part Samples
- Our Customers





ABOUT US

We have been trusted in the CNC machining industries for **more than 40 years**, specialising in manufacturing of machining parts. We aim to provide quality, on time delivery and reasonable price.

We also offer milling, grinding, sawing, drilling and tapping, and welding. We have high standard measuring instrument for accurate specification.





ABOUT US



We also have been certified in every process by IATF 16949: 2016.

We therefore are able to support our customers with OEMs order with mass production and low volume for special order both domestically and internationally.

We have standard for packing, protecting, and storing parts before delivering to our customers.

QUALITY POLICY

Quality

We control the specification closely. We have standard of measuring points.
We follow NG procedures carefully. We estimate possible risks and use it for future improvement.

Safety

Safety means we estimate possible factor which can cause accident and put it into the working policy and procedures.

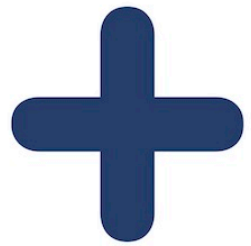
Continuous Improvement

Continuous Improvement means we continue to reinforce 5S and to invent new equipment to avoid errors.

Customers' Satisfaction

All of our working policies are set to meet Customers' Satisfaction.

OUR SERVICES



Turning

Milling



Grinding

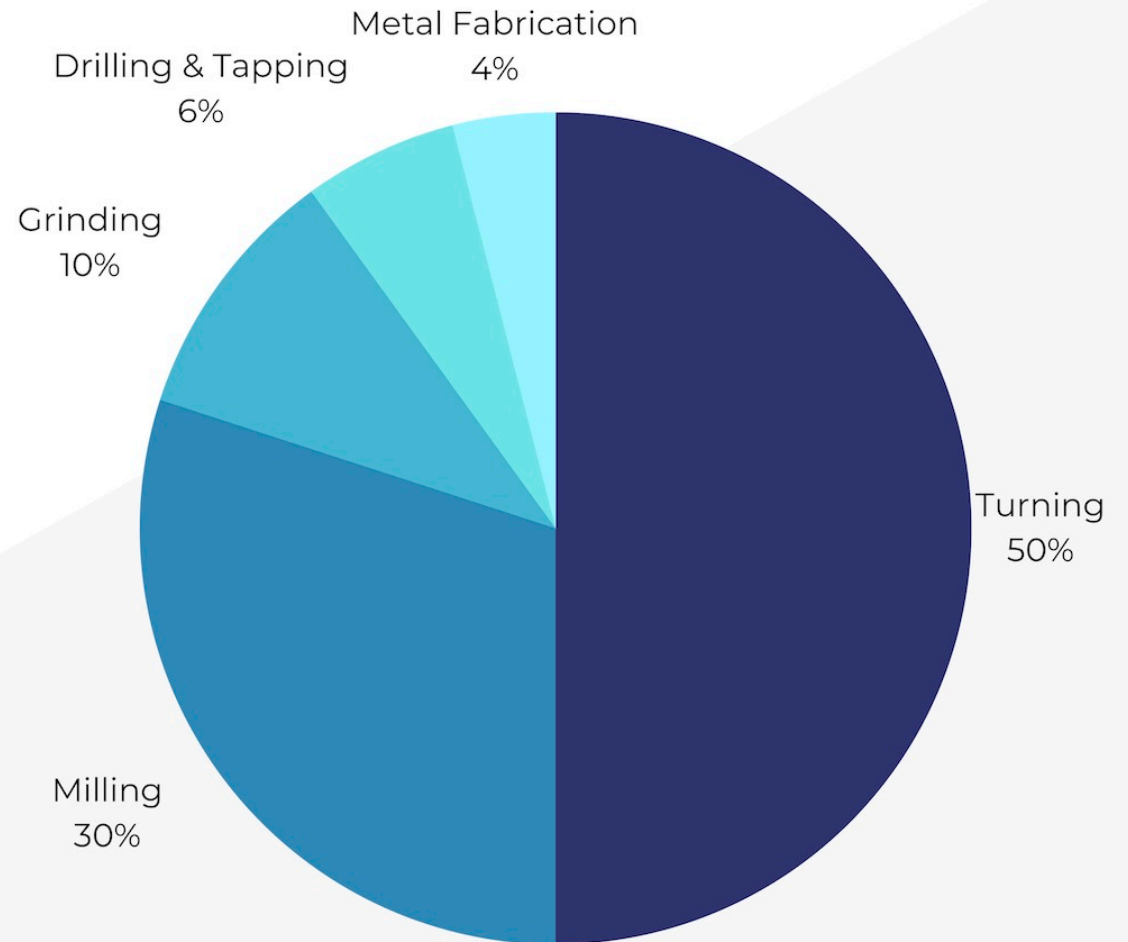
**Drilling
&
Tapping**

**Metal
Fabrication,
Welding &
Assembly**



OUR SERVICES

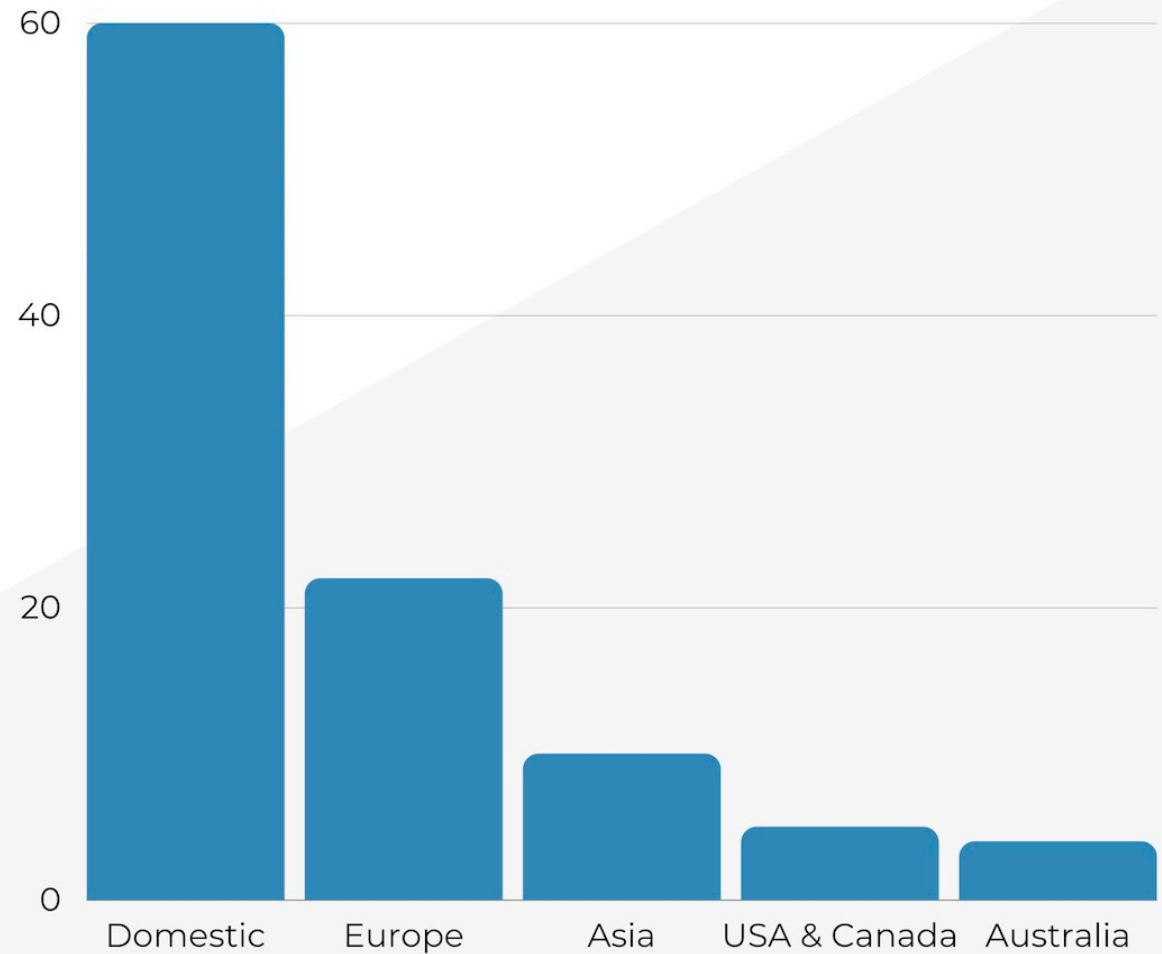
- Turning
- Milling
- Grinding
- Drilling & Tapping
- Metal Fabrication, Welding & Assembly





DOMESTIC & INTERNATIONAL SALES VOLUME RATIO

- Domestic
- Europe
- Asia
- USA & Canada
- Australia

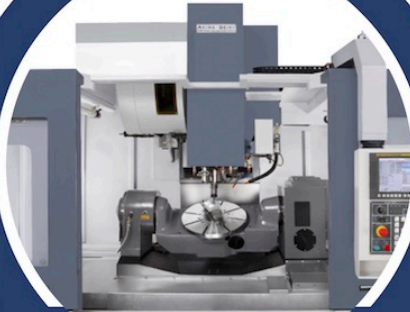


LIST OF MACHINES



CNC Lathe Machine

30 Units



CNC Machining Center

10 Units



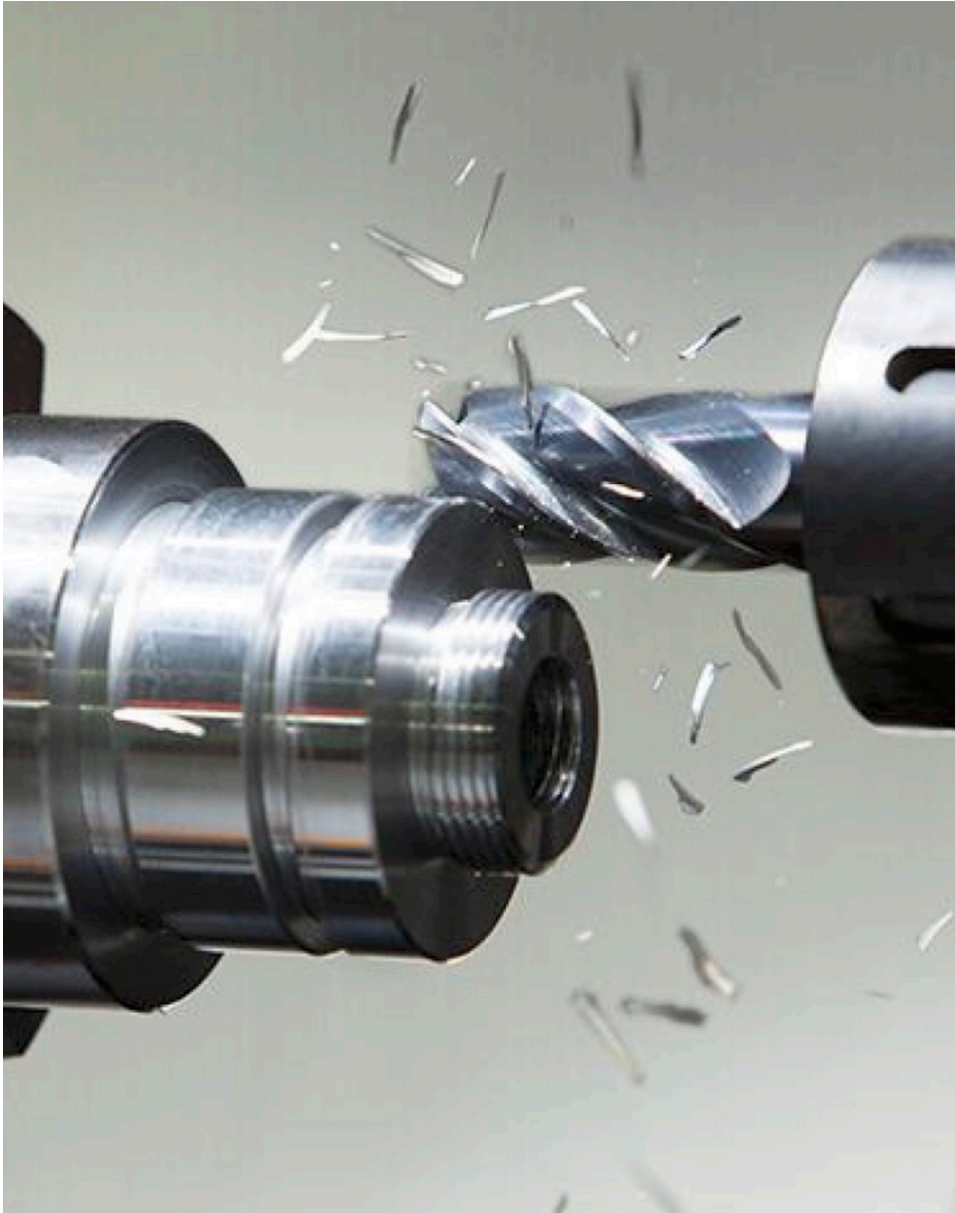
Milling Machine

6 Units



NC Band SAW

3 Units



LIST OF MACHINES

○ ○ ○ ○

• Hack Saw	2 units
• Cylindrical Grinding Machine	1 unit
• CNC Internal Grinding Machine	1 unit
• Automatic Internal Grinding Machine	1 unit
• Surface Grinding Machine	2 units
• Centerless Grinding Machine	2 units
• Drilling Machine	12 units
• Hydraulic Press Machine	1 unit
• Micro Grinder	1 unit
• Precision Tool Grinder	9 units



LIST OF MEASURING INSTRUMENTS

- Coordinate Measuring Machine (CMM) 3 units
 - Hardness Tester 1 unit
 - Contracer Measuring 1 unit
 - Surface Rougness 1 unit
 - Digital Height Gauge 2 units
 - Gauge Block Set 1 unit
 - Other Inspection Tools 95 units
- (In Process Measuring)





IATF 16949:2016 CERTIFIED

- **Quality Management System**
- **Scope: The Manufacture Of Machining Part**
- **Fulfills The Requirement Of The Following International Automotive Standard**



CERTIFICATE



This is to certify that

BOMAG CO., LTD.

15 Soi Thakham 12, Samaedum
Bangkhuntien, Bangkok 10150
Thailand

has implemented and maintains a **Quality Management System**.

Scope:

The manufacture of machining parts

An audit, conducted and documented in a report, has verified that this quality management system fulfills the requirements of the following International Automotive Standard:

IATF 16949:2016

(without product design)

Certificate registration no. 420224 IATF16
Issuing date 2021-09-13
This certificate is valid until 2024-09-12
IATF No. 0424297



2-IAO-QMC-01001

For and on behalf of DQS

Nurani S. Venkatachalam
Director-Corporate Automotive Program, DQS Holding GmbH

Michael Drechsel
Managing Director, DQS Holding GmbH

IATF Contract Office: DQS Holding GmbH, Konrad-Adenauer-Allee 8-10, 61118 Bad Vilbel, Germany

2017-03-09

PART SAMPLES



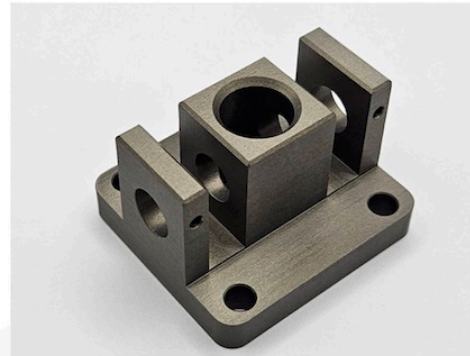
In producing high precision products with CNC turning, grinding, milling, drilling, tapping, welding and sawing.

PART SAMPLES



In producing high precision products with CNC turning, grinding, milling, drilling, tapping, welding and sawing.

PART SAMPLES



In producing high precision products with CNC turning, grinding, milling, drilling, tapping, welding and sawing.

OUR CUSTOMERS



Automotive :



DANA SPICER (THAILAND) CO., LTD.



KYOSEKI (THAILAND) CO., LTD.



SAMCO CO.,LTD.



A.S.I PRECISION CO., LTD.



THAI SHINMAYWA CO., LTD.



YOKOHAMA RUBBER (THAILAND) CO., LTD.

Air Conditioner:



EMERSON



YARNAPUND PUBLIC COMPANY LIMITED.



FASCO MOTORS (THAILAND) LTD.

Factory Machinery:



PGM & PARTNER CO., LTD.



KITAZAWA



HUSKY INJECTION MOLDING SYSTEM INC

Forklift Parts:



TVH FORKLIFT PARTS

Electrical Appliance:



ELECTROLUX PROFESSIONAL (THAILAND) CO., LTD.

Motorcycle:



RSP AUTOMOTIVE & INDUSTRIAL PTY LTD.

Electrical Appliance:



Chuo Koki

CHUOKOKI (THAILAND) CO., LTD.

○ ○ ○ ○

THANK YOU

*We look forward to working
with you*

OFFICE



Bomag Co., Ltd.

15 Soi.Thakham 12, Samaedum,

Bangkhuntien, Bangkok, Thailand, 10150



+66 (2) 895-6088



sales@bomag.co.th



www.bomag.co.th



○ ○ ○ ○